

## METALOCK REPAIR REPORT

Engine Maker : YANMAR CO. LTD.  
Engine Type : 8N21L-SV  
Engine Cont. Rating :880 KW  
Repair Company :METALOCK INTERNATIONAL / 20.01.2015  
Repair Description:

Summary & Conclusion: Due to connecting rod bolt failure rod bottom bearing shell cap broke through the engine frame and caused cylinder block damage. Metalock repair proposal is that damaged part shall be fabricated by casting from proper material after material analyse of original cylinder block. Analyse report shall be provided accordingly. Fabricated part shall be installed by metalock repair procedure.



Cleaning and preperation of the damaged area completed. Thin walls removed by grinding

machine to enable modeling.



Upon completion cleaning and grinding of damaged surface modelling started. A model from wood manufactured carefully.



Material of the original block analyzed to determine the components. After getting analyse results proper material prepared to be used for casting. Patch fabrication by casting from determined material got completed.

Machining and alignment of fabricated casting part to its place started. This process handled

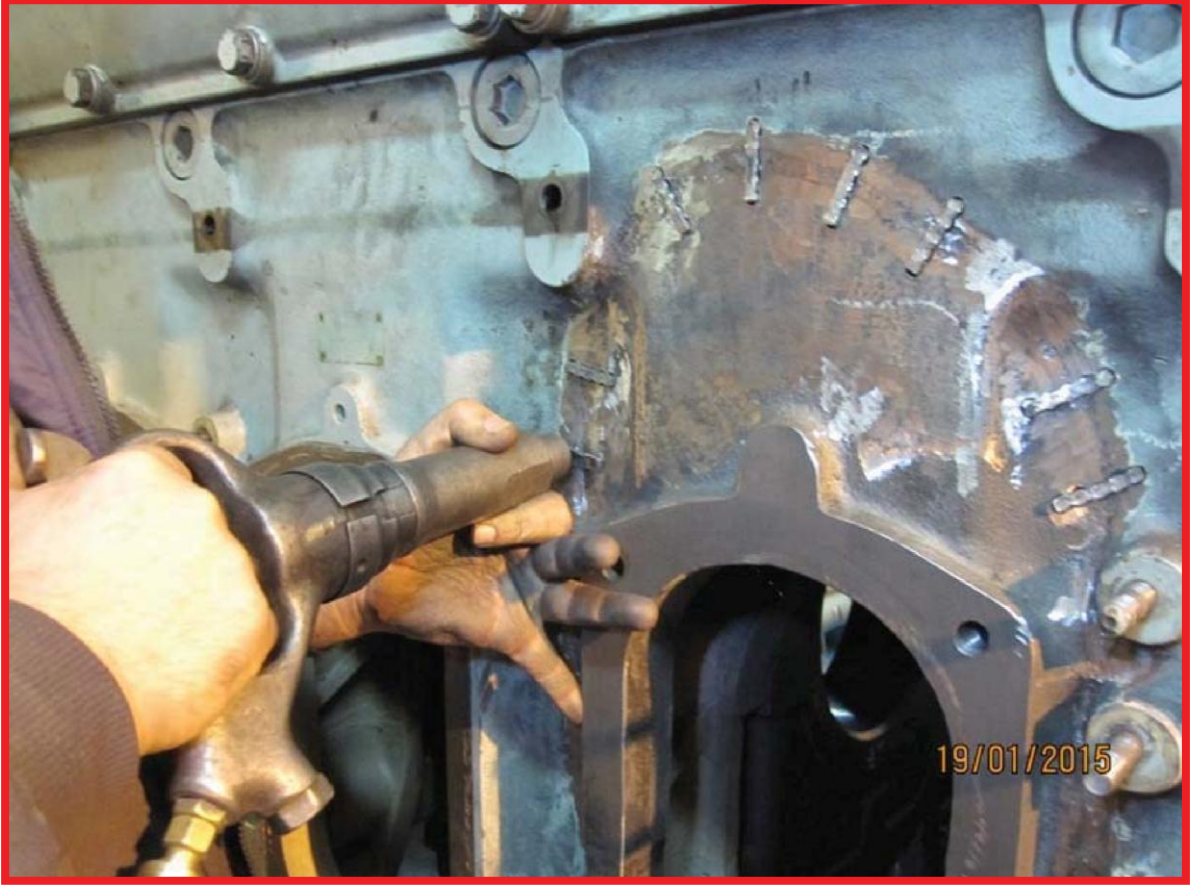


carefully to provide best locking implementation.



Once alignment of the fabricated casting finished standart metallock repair followed to conclude the repair





Finally upon completion of metalock repair grinding and surface dressing completed. Seat cover of the repaired part got flattened and holes drilled to be threaded for cover connection.

Threading finished and cover mounted.

